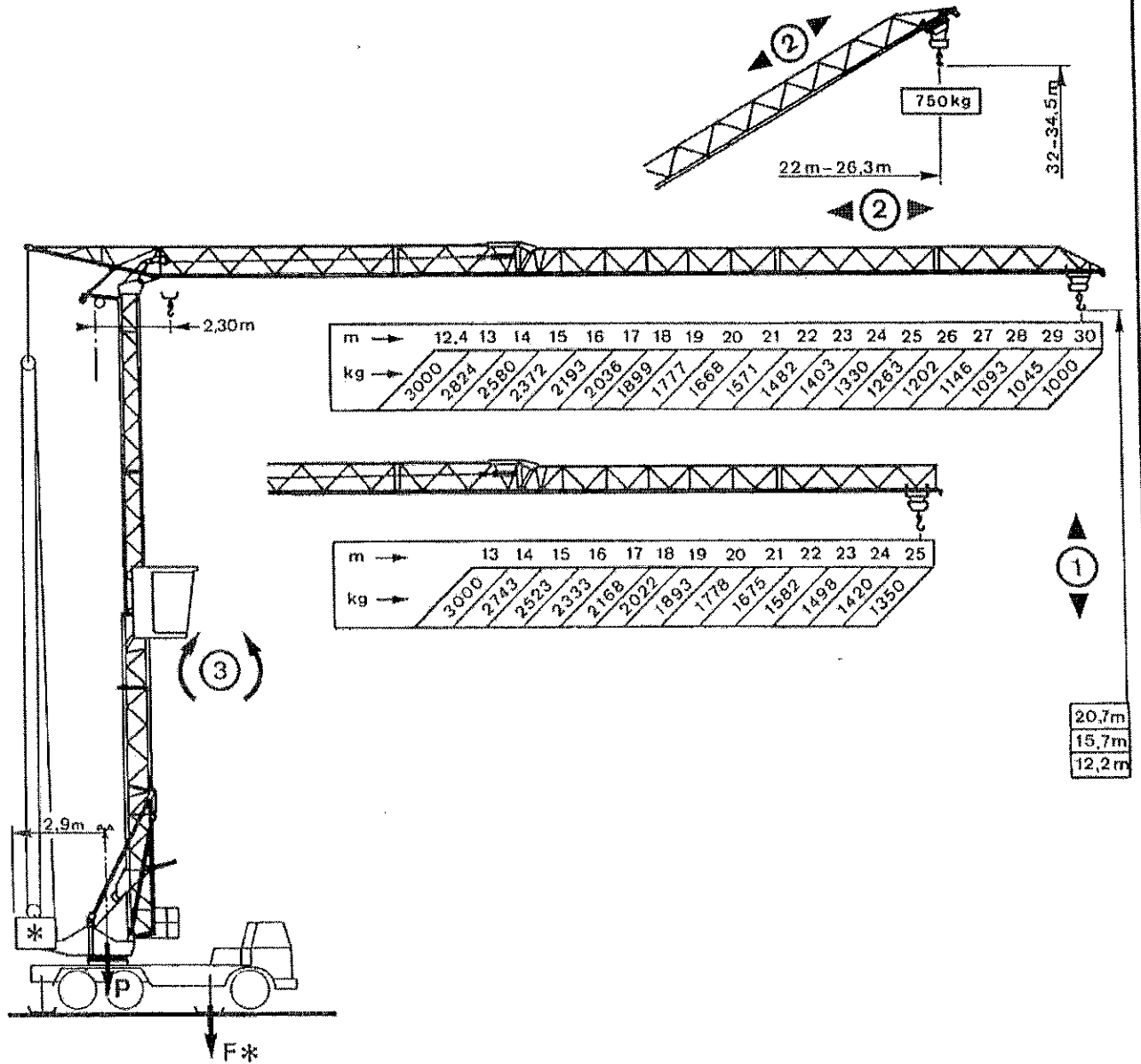


## TORNSVÄNGKRAN, CHASSIEMONTERAD, POTAIN GMR 326 D












**ELEKTRISKA DATA:**

Elektrisk ansl: 3x380 V      Ansl handske: CP 432-6<sub>2</sub>  
 Ansl effekt: 20 kVA      Ansl kabel: 5 x 10 mm<sup>2</sup>  
 Säkring: 32 A

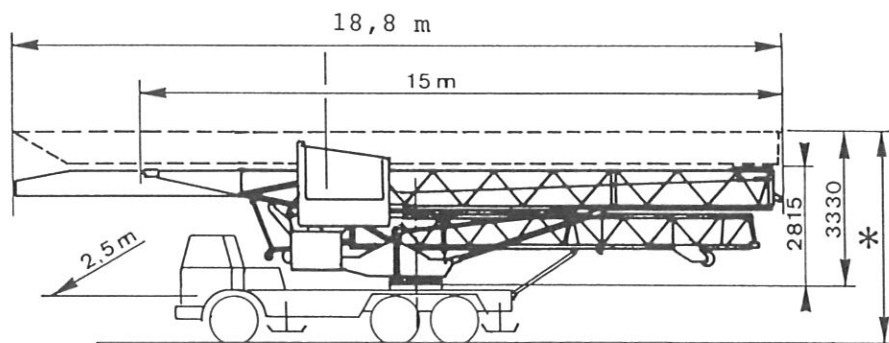
**TEKNISKA DATA:**

Motvikt: 8,2 ton  
 Kranvikt med chassie och motvikt: 33 ton ca  
 Axeltryck med motvikter: 11 ton  
 Stöbenstryck: 25 ton

lyftmaskineri lyfthast			kg	m/mn
			3000	4
		bd	1500	8
			3000	12,5
		bd	1500	25
			2000	25
		bd	1000	50

Löpvagn - sväng	
3D2V5	22-44 m/mn
	35 m/mn
3D1V5	
RCV 20	0 → 1 tr/mn
	

**TRANSPORT:**



Bredd med kranhytt 2,85 m

\* Transporthöjd 4,30 m